

# PERIPARTURIENT DISEASES IN THE BITCH

Meritxell Paraira Puchal

FINAL DEGREE PROJECT / JUNE 2021

## Objectives

The aim of this project is for dog owners to know what it means to have a pregnant bitch. Give them the knowledge about the normal progress of pregnancy, delivery and postpartum and which are the most frequent pathologies that can occur along the peripartum.

There are different pathologies depending on the stage:

## Pathologies related to pregnancy

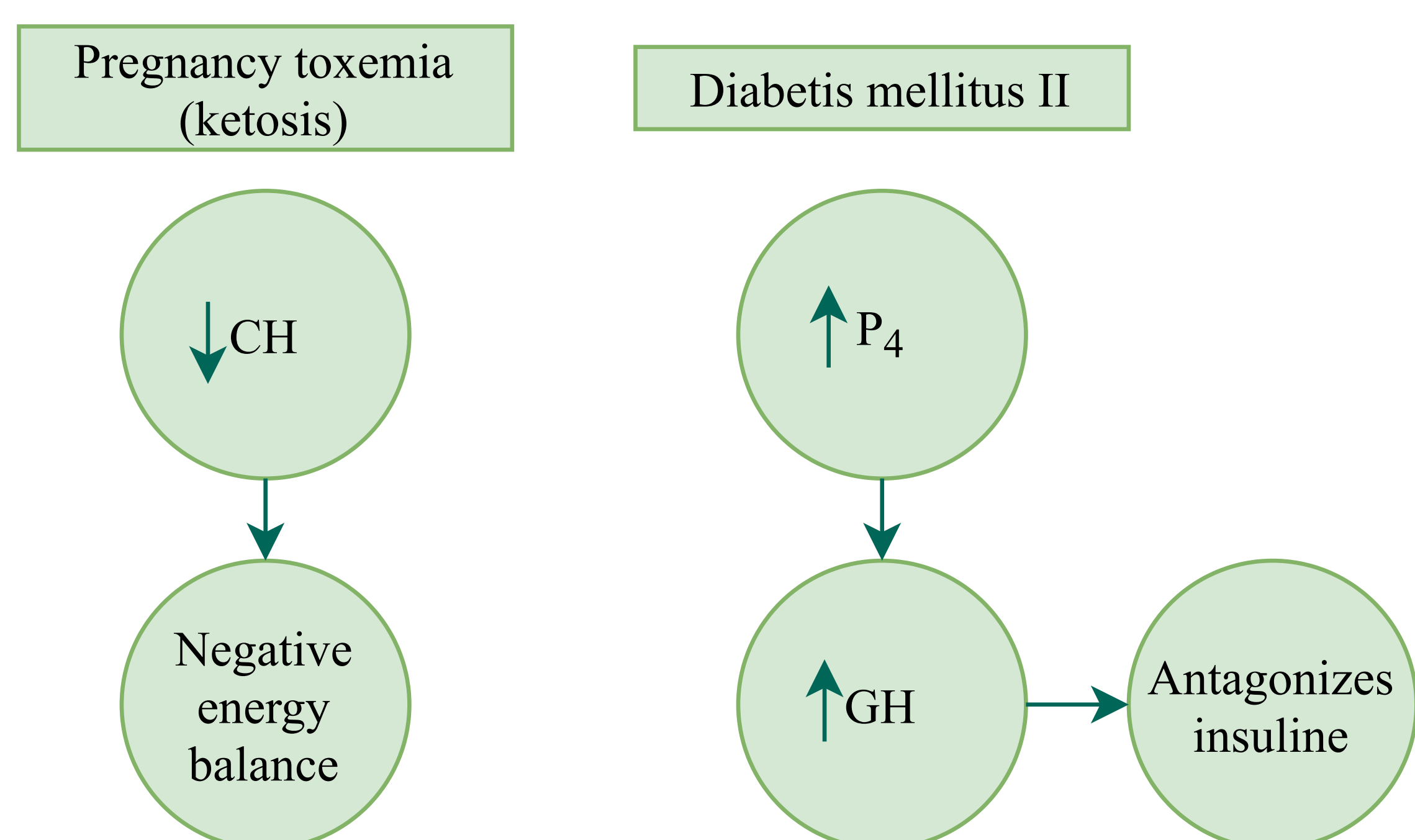


Illustration 1  
Pathophysiology of these pathologies.  
Abbreviations: CH = carbohydrates; P<sub>4</sub> = Progesterone; GH = Growth hormone

## Dystocia

It is useful to estimate when the bitch got pregnant and to know when the delivery had started because it will make easier the identification of a dystocia. Predisposing factors for dystocia can be maternal or fetal.

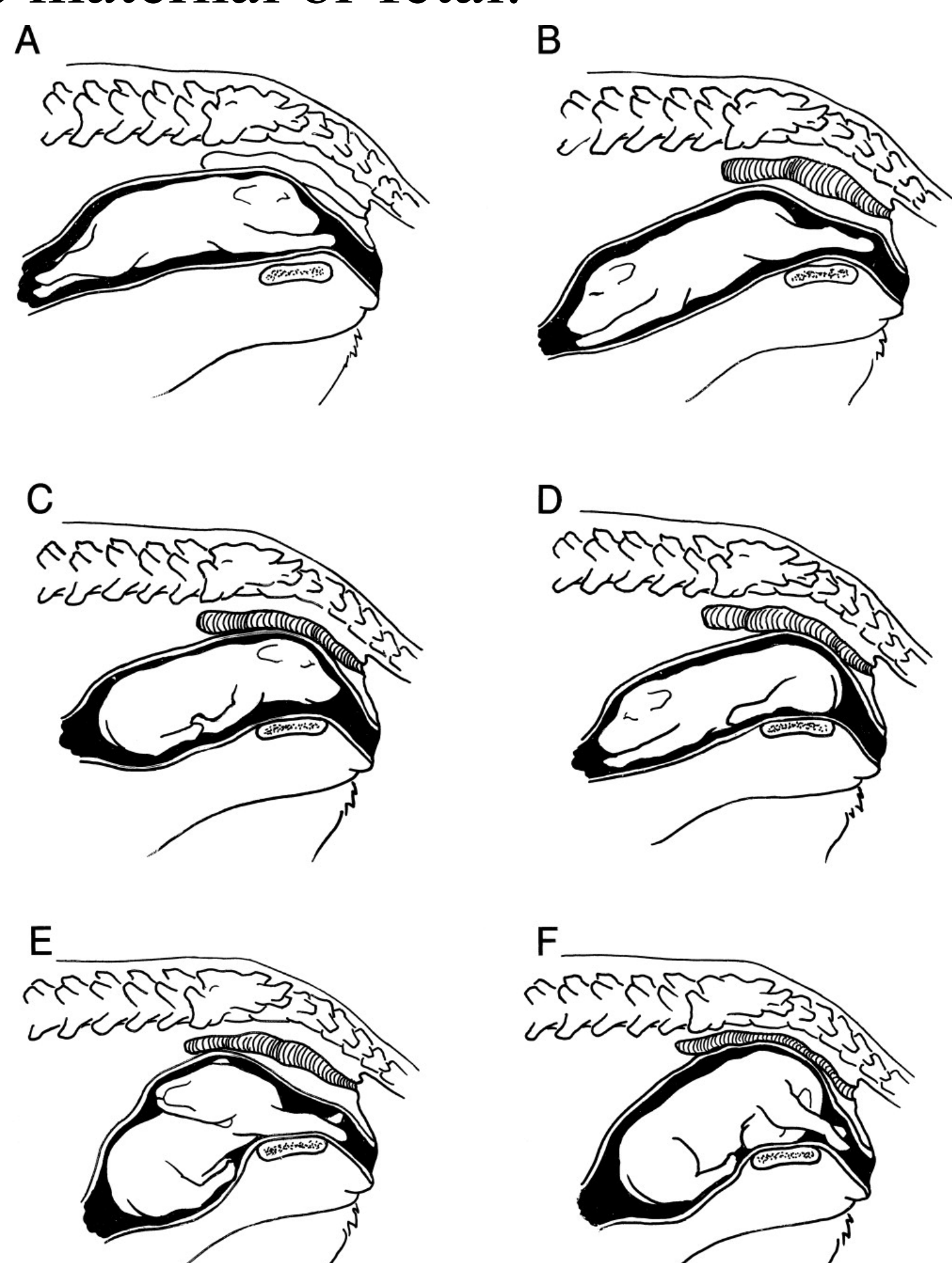


Illustration 2  
Fetal presentations, postures and positions. Johnston, S. D. & Root Kustritz, M. V. & Olson, P. N. S. (2001). Canine parturition. In: Canine and Feline Theriogenology. Saunders. Philadelphia. pp 111.

## Postpartum pathologies

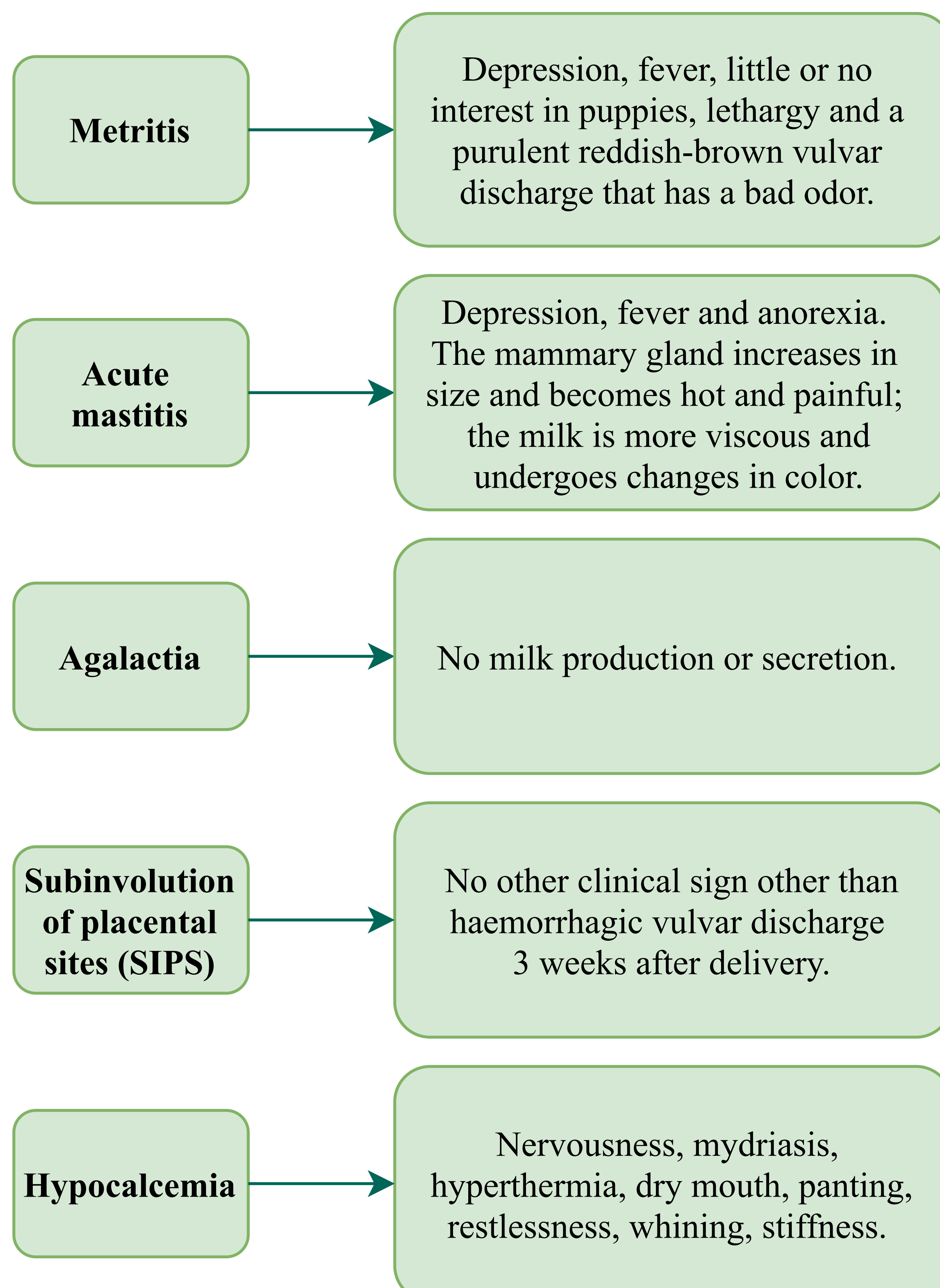


Illustration 3  
Clinical signs of each postpartum pathology

## Conclusions

It is useful to know each of these pathologies and when do they more often occur to be able to act early in case of any of them happens.

Due to all these pathologies it is clear that it is necessary to take good care of the pregnant bitch.