

Evolution of the wild goat (*Capra pyrenaica*) population in the Montserrat Mountain Natural Park. Considerations for its management

Carolina Fernández Lorente
Final degree project-February 2025
Faculty of Veterinary Medicine



Introduction

- The origin of the ibex population in the MMNP is a translocation of 46 goats carried out from the Ports de Tortosa and Beceite National Hunting Reserve in 1996.
- There are 3 populations of ibex in Catalonia: The Montserrat Mountain Natural Park, the Ports de Tortosa and Beceite National Hunting Reserve, and Montgrí, Medes Islands and Bajo Ter Natural Park.
- Current management is through hunting activity.

Objectives

- carrying out genetic enrichment.
- implementing specific health studies.
- translocation and territorial connection of the population's distribution areas.

Genetic enrichment

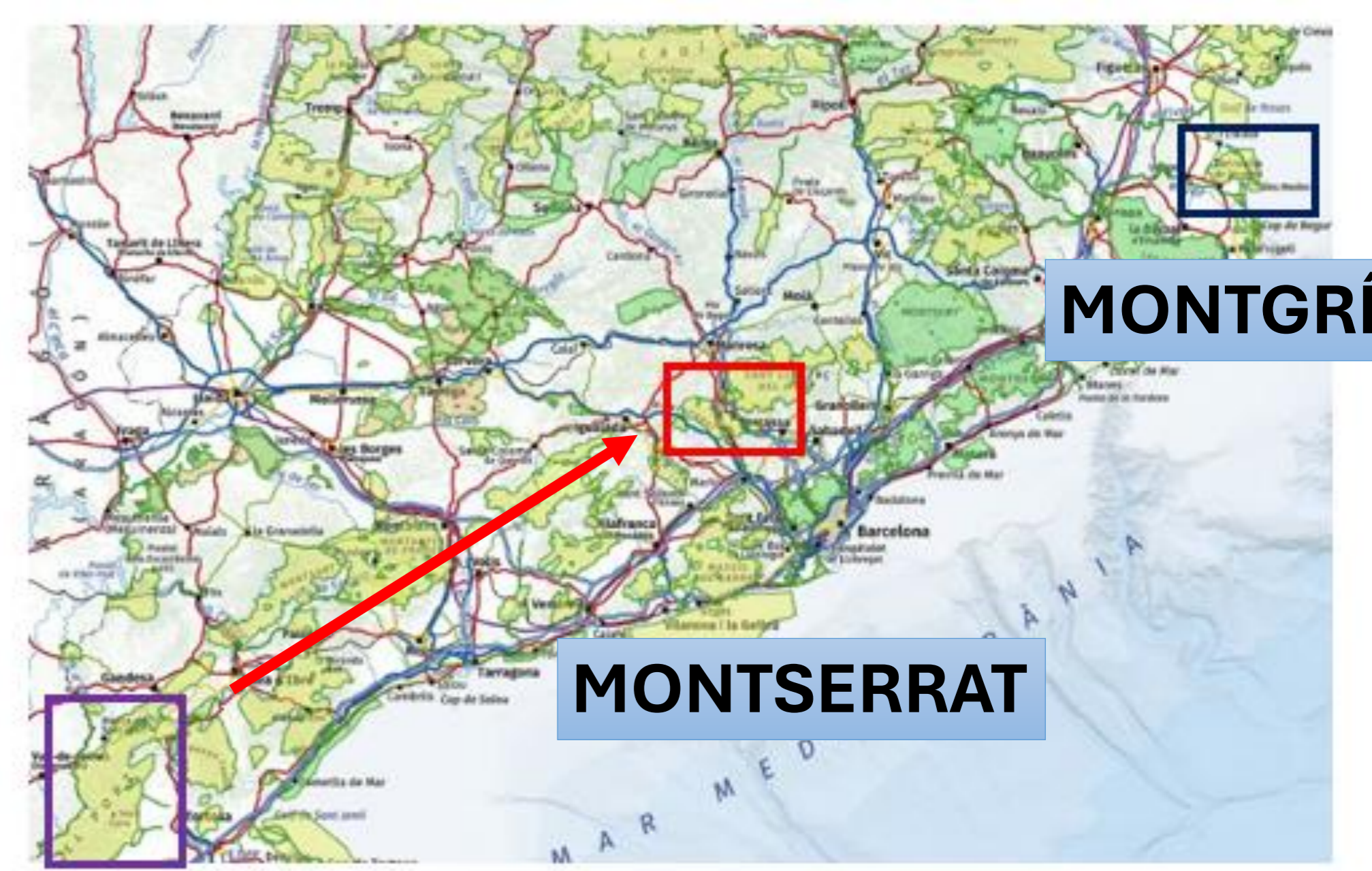
Ports de Tortosa and Beceite National Hunting Reserve
H1-H11

Montgrí, Medes Islands and Bajo Ter Natural Park
H12 H13 H14

Montserrat Mountain Natural Park
H10

Health studies

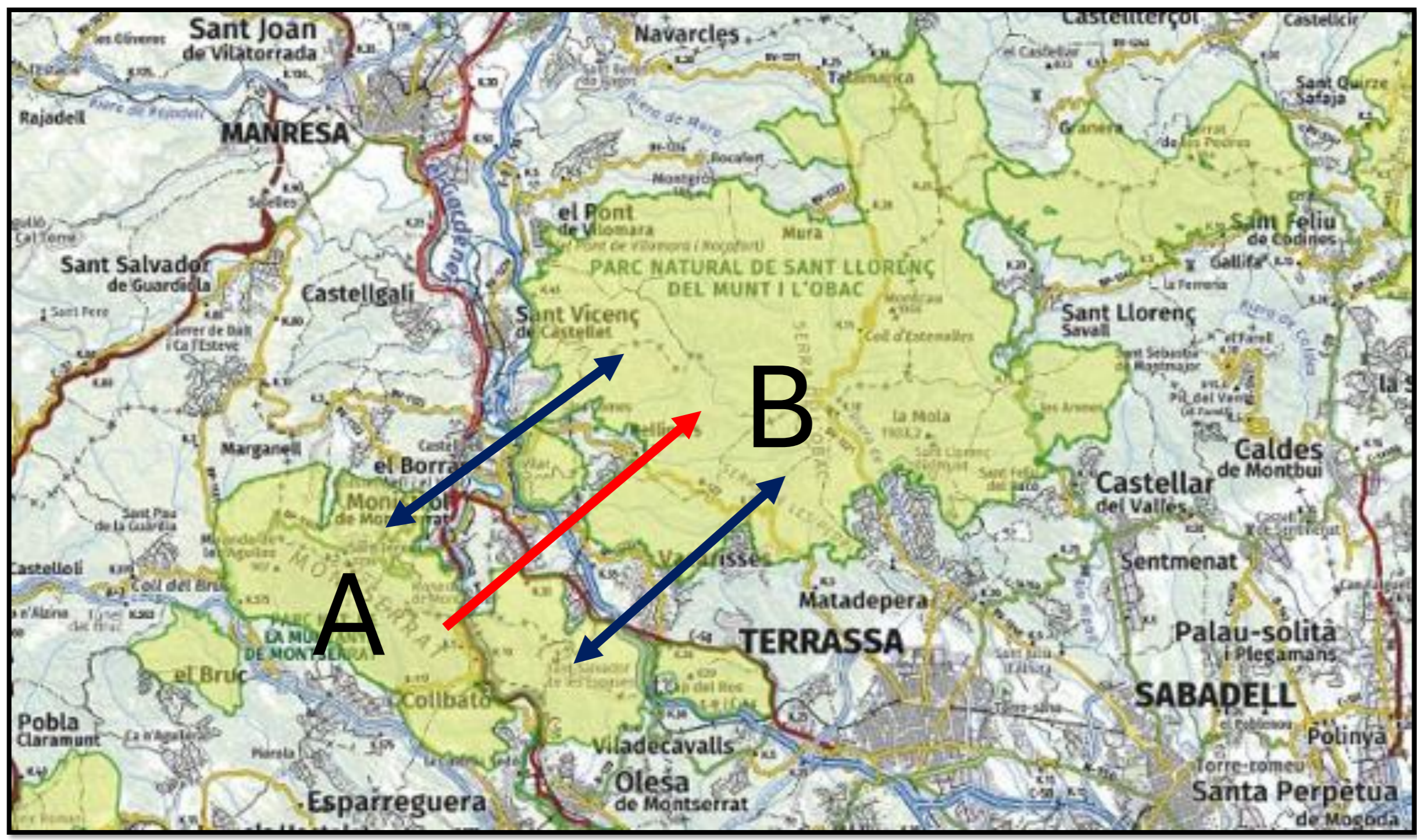
viruses, bacteria, protozoa, fungi, parasites



BECEITE



Translocation and Ecological corridors

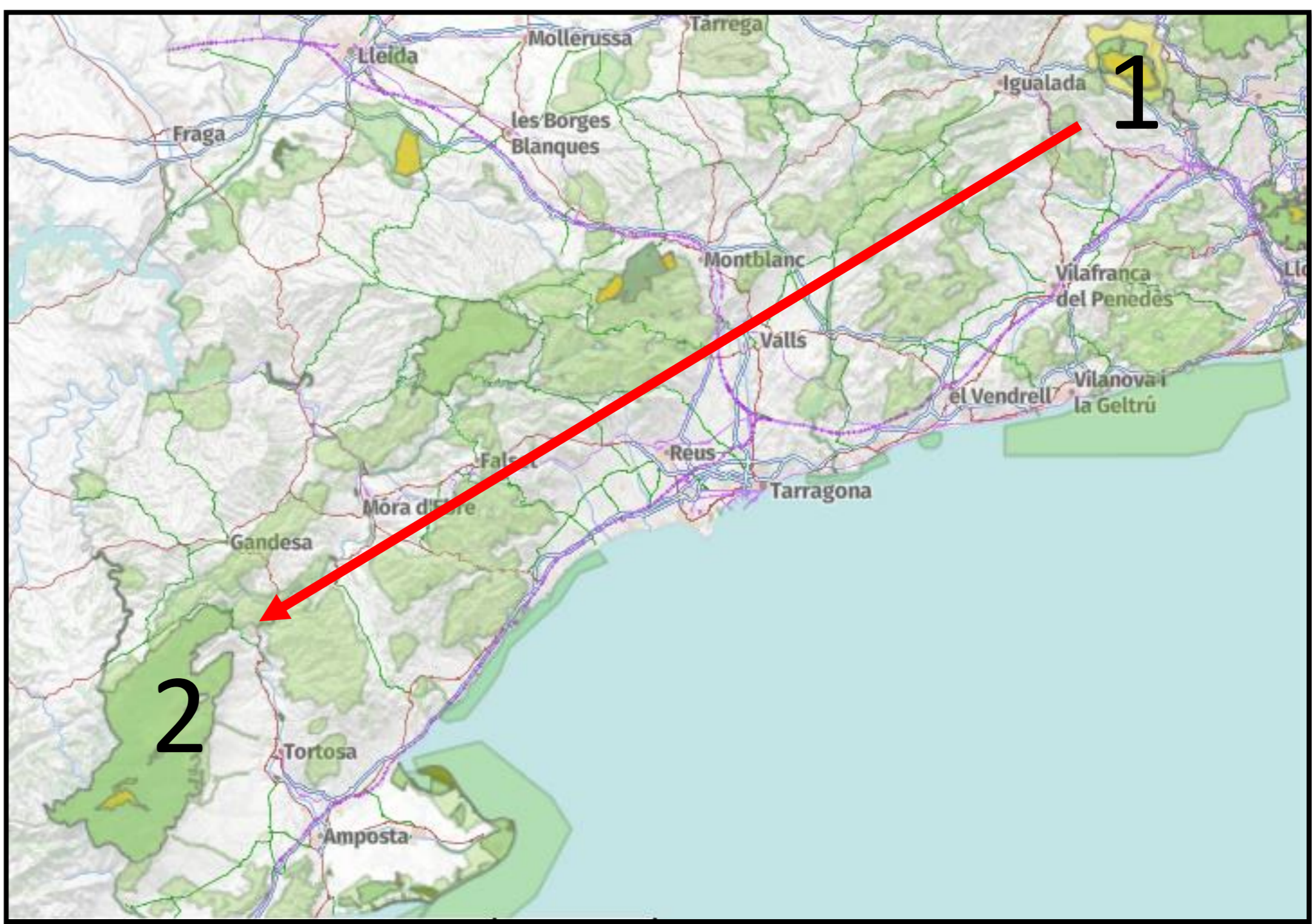


A: Montserrat Mountain Natural Park

B: Sant Llorenç de Munt and l'Obac Natural Park

Ecological corridors

Translocation



2: Ports de Tortosa and Beceite National Hunting Reserve

1: Montserrat Mountain Natural Park

Translocation

Conclusions

- it is possible to work with a population of ibex in a state of freedom and carrying out studies without the need to keep the animals confined.
- control of the ibex population can be carried out using methods other than hunting activity, such as translocation and the development of ecological corridors, so that there is compatibility between them.
- it is necessary to deepen the knowledge of aspects such as genetics, health, habitat or ethology.
- it is possible to relate the Montserrat Mountain Natural Park ibex population with the other populations of Catalonia, which to date have remained isolated from each other.
- using management measures with scientific support, as well as field knowledge and experience, the ibex can be allowed to disperse and thus expand its distribution area.